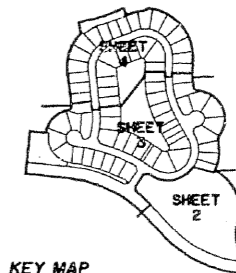


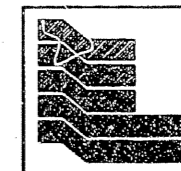
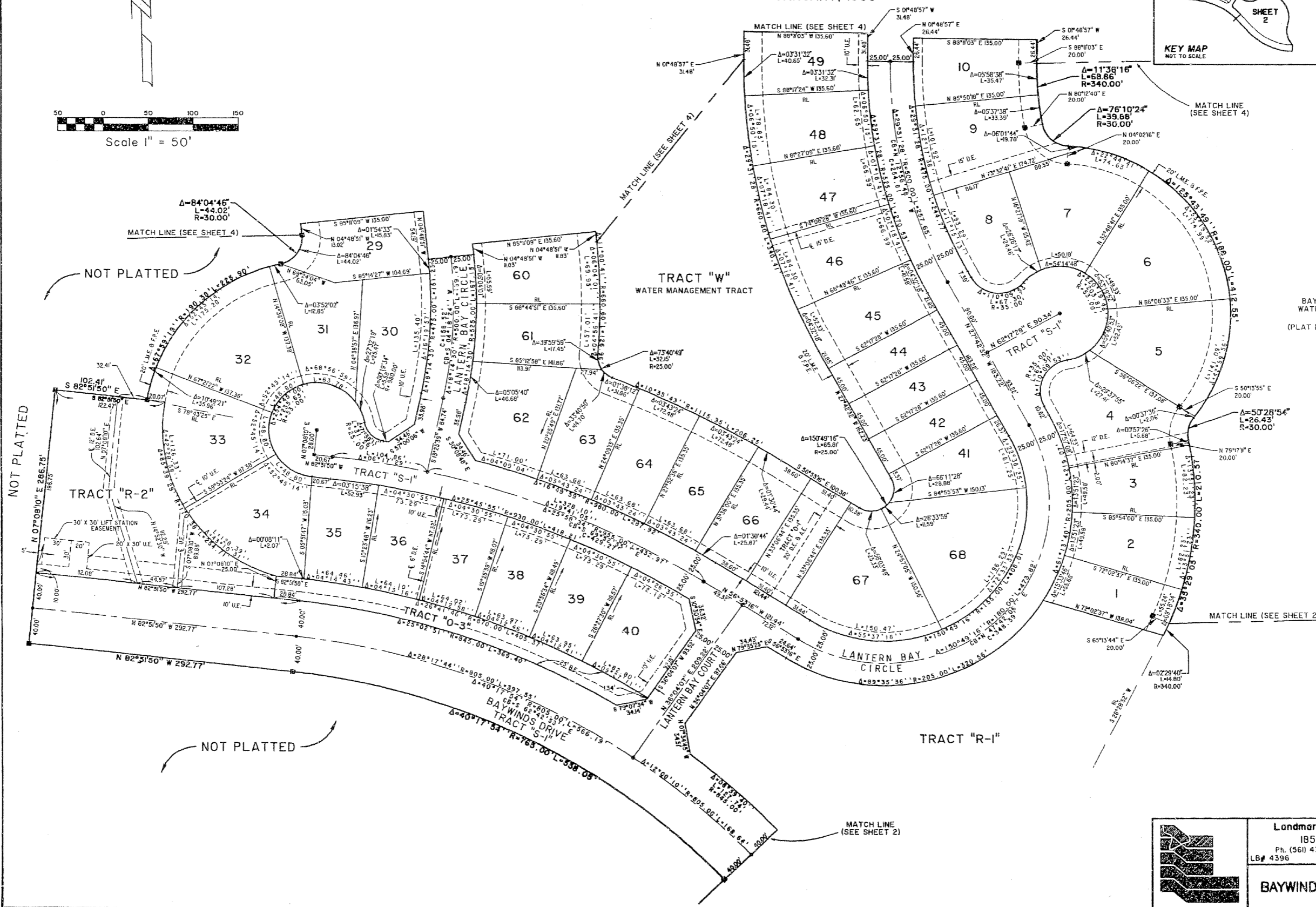
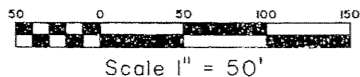
# BAYWINDS R.P.D. PLAT NO. 2

BEING A PORTION OF SECTION 19, TOWNSHIP 43 SOUTH, RANGE 42 EAST AND THE REPLAT OF TRACT "L-2" BAYWINDS R.P.D. PLAT NO. 1 AS RECORDED IN PLAT BOOK 84, PAGES 137 THROUGH 143, PUBLIC RECORDS OF PALM BEACH COUNTY, FLORIDA, ALL LYING IN SECTION 19, TOWNSHIP 43 SOUTH, RANGE 42 EAST, CITY OF WEST PALM BEACH, PALM BEACH COUNTY, FLORIDA  
SHEET 3 OF 4 JANUARY, 1999

150



STATE OF FLORIDA  
COUNTY OF PALM BEACH  
THIS PLAT WAS FILED FOR RECORD AT \_\_\_\_\_  
M. TIME DAY OF \_\_\_\_\_  
AND DULY RECORDED IN PLAT BOOK NO. \_\_\_\_\_  
ON PAGE \_\_\_\_\_  
DOROTHY K. WILKIN, CLERK OF THE CIRCUIT COURT  
BY \_\_\_\_\_, U.C.



Landmark Surveying & Mapping Inc.  
1850 Forest Hill Boulevard  
Ph. (561) 433-5405 Suite 100 W.P.B. Florida  
LB# 4396  
**BAYWINDS R.P.D. PLAT NO. 2**